

# CITY OF NORTHFIELD TAX MAPS

## HOW TO LOCATE THE BLOCK AND LOT FOR A SPECIFIC PROPERTY

### I. THE KEY MAP

On the next page is the KEY MAP page – this shows the entire City. Individual areas, separated by dotted lines, each represent a page on the City’s tax maps. Tax map page numbers appear in **GREEN** circles on the KEY MAP

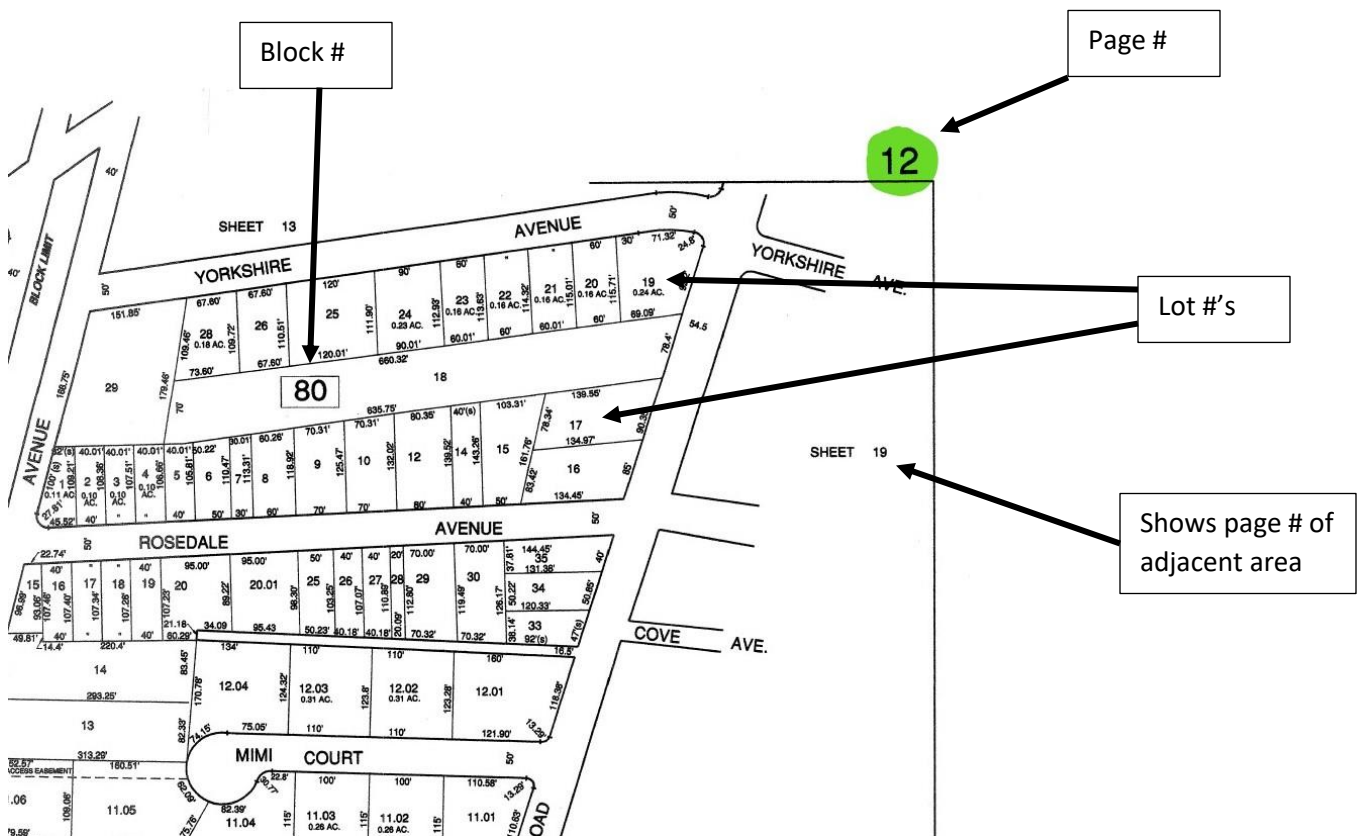
On the KEY MAP, locate the general area for the property in question, then locate the specific street. *The document is in PDF format and you may need to use the ‘zoom’ function on your device to read individual street names.*

Identify the tax map page number (**GREEN** circle) for the property you are seeking to locate.

Page down through the document to locate that PAGE of the tax map you are seeking – PAGE NUMBERS for each individual page are in the upper right corner of each page and have been highlighted in **GREEN**.

### II. INDIVIDUAL PAGES

On each individual page of the tax map, the BLOCK NUMBERS are listed inside a rectangle, and individual lot numbers appear within the borders of the parcel of land. See sample, below







**LEGEND**

MUNICIPAL BOUNDARY LINE	
ARTIFICIAL BLOCK LIMIT	
FORMER PROPERTY LINE	
STREAM & WATER LINES	
STREAM & WATER LINES (IF PROPERTY LINE)	
SHEET LIMIT LINE (ON KEY MAP)	
PIERHEAD LINE	
BULKHEAD LINE	
FLOOD HAZARD LINE	
EASEMENT LINE	
ASSESSMENT LINE	
MEADOW LINE	
BLOCK NUMBER (ON KEY MAP)	
BLOCK NUMBER	
TAX MAP SHEET NUMBER	
LOT NUMBER	
SCALED DISTANCE/ACREAGE	
DEED DISTANCE/ACREAGE	
CALCULATED DISTANCE	

THIS SHEET IS A REVISED COPY OF THE ORIGINAL STAMPED MYLAR DATED 2/19/2010, SERIAL NUMBER 947.

I HEREBY CERTIFY THAT THIS MAP AND THE SURVEY HAS BEEN MADE UNDER MY IMMEDIATE SUPERVISION AND COMPLIES WITH THE LAWS OF THE STATE OF NEW JERSEY.

MATTHEW F. DORAN, P.E. & L.S. No. 26273

**TAX MAP**  
**CITY OF NORTHFIELD**  
 ATLANTIC COUNTY  
 SCALE: 1" = 500'  
 NEW JERSEY  
 JANUARY 2008

**MATTHEW F. DORAN P.E., P.L.S., P.P.**  
 N.J. P.E. & P.L.S. LIC. NO. 26273  
 840 NORTH MAIN STREET  
 PLEASANTVILLE NEW JERSEY, 08232

TO SHOW CONDITIONS OF JANUARY 1, 2008

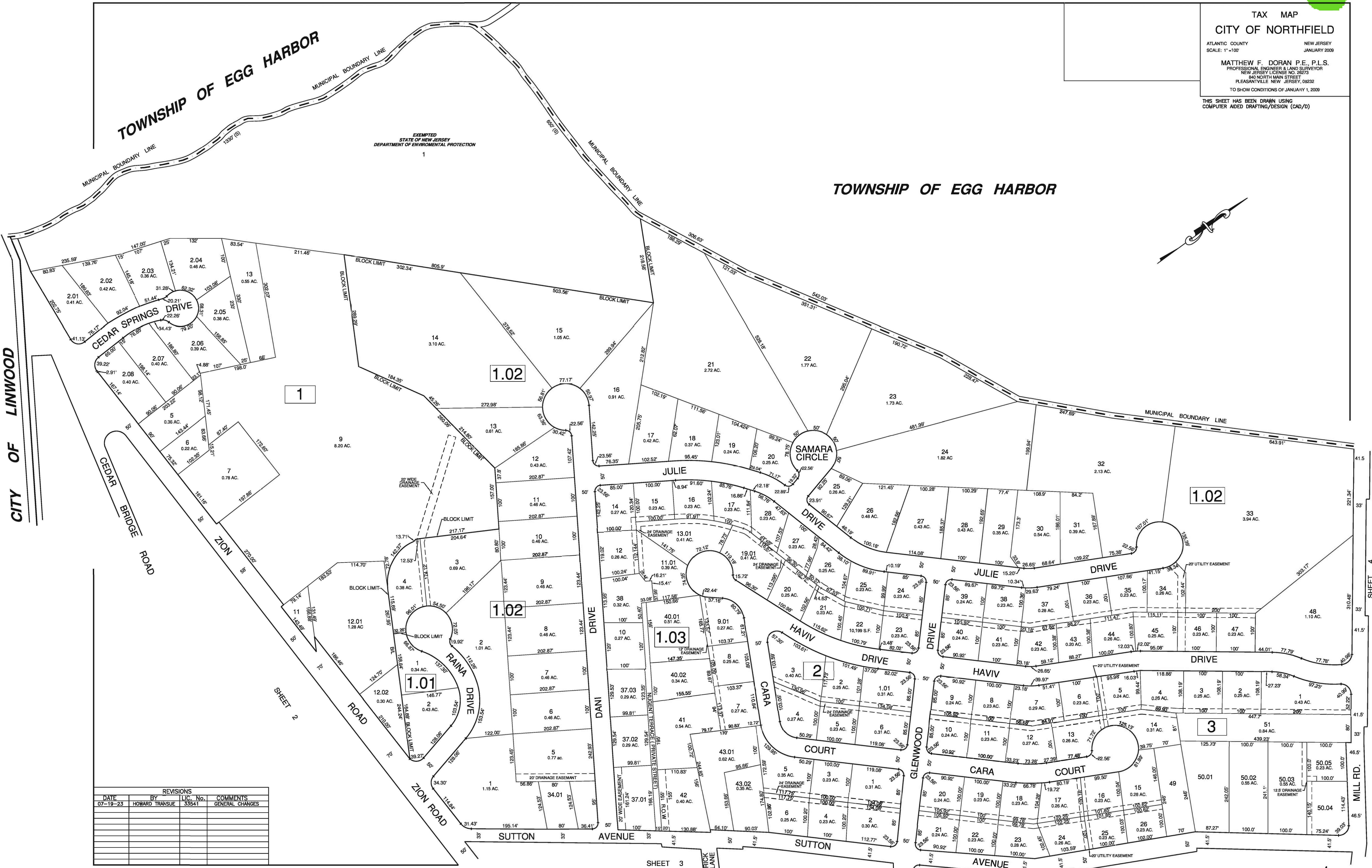
REVISIONS			
DATE	BY	LC#	COMMENTS
3/29/10	MATTHEW F. DORAN	26273	BL. #9 LOTS 11.01-11.07
7/19/23	HOWARD TRANSUE	33541	GENERAL CHANGES

**NOTES:**  
 1. THE LINES, BOUNDARIES AND DIMENSIONS SHOWN ON THIS TAX MAP ARE DERIVED FROM GROUND SURVEYS, AERIAL SURVEYS, AND RECORDED PLANS, MAPS, DEEDS, AND WILLS AND ARE TO BE USED FOR ASSESSMENT PURPOSES ONLY.  
 2. THIS TAX MAP SUPERCEDES THE TAX MAP APPROVED DATE: JANUARY 1, 1968.  
 3. THIS SHEET HAS BEEN DRAWN USING COMPUTER AIDED DRAFTING/DESIGN (CAD/D).

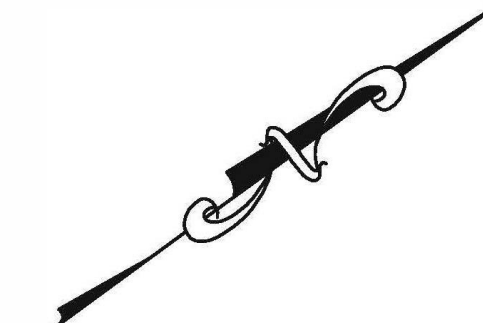


TAX MAP  
 CITY OF NORTHFIELD  
 ATLANTIC COUNTY NEW JERSEY  
 SCALE: 1"=100' JANUARY 2009  
 MATTHEW F. DORAN P.E., P.L.S.  
 PROFESSIONAL ENGINEER & LAND SURVEYOR  
 NEW JERSEY LICENSE NO. 28273  
 840 NORTH MAIN STREET  
 PLEASANTVILLE NEW JERSEY, 08232  
 TO SHOW CONDITIONS OF JANUARY 1, 2009

THIS SHEET HAS BEEN DRAWN USING  
 COMPUTER AIDED DRAFTING/DESIGN (CAD/D)



EXEMPTED  
 STATE OF NEW JERSEY  
 DEPARTMENT OF ENVIRONMENTAL PROTECTION  
 1



REVISIONS			
DATE	BY	LIC. No.	COMMENTS
07-19-23	HOWARD TRANSUE	33541	GENERAL CHANGES

CITY OF LINWOOD

TOWNSHIP OF EGG HARBOR

1

1.02

1.02

1.02

1.03

1.01

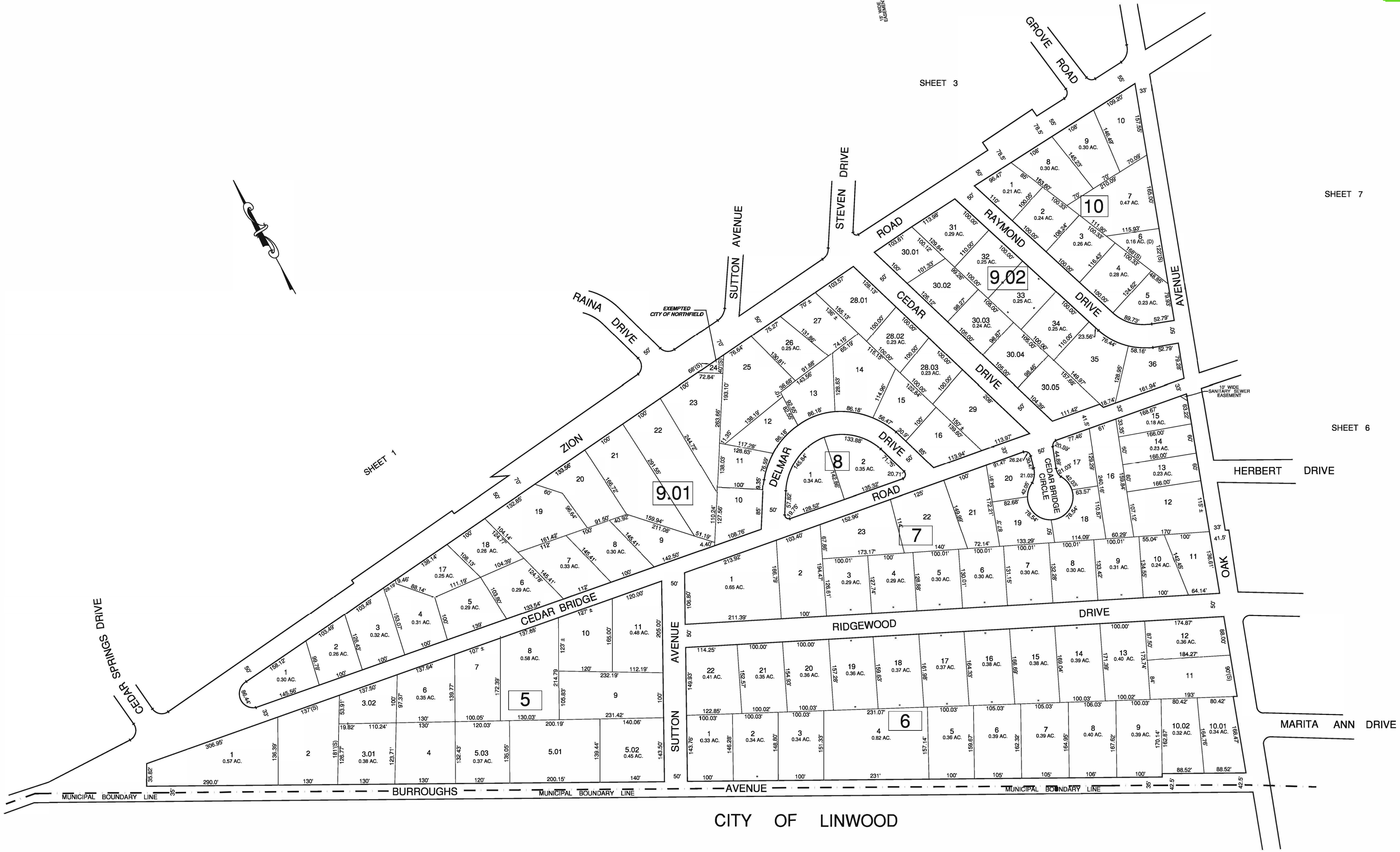
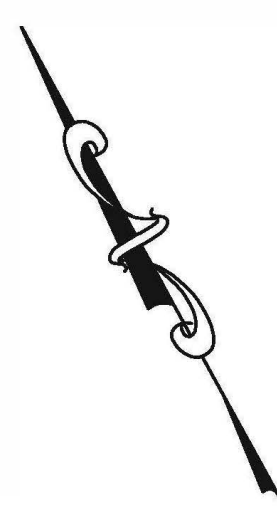
3

SHEET 3

SHEET 2

SHEET 4





REVISIONS			
DATE	BY	LIC. No.	COMMENTS
07-19-23	HOWARD TRANSUE	33541	GENERAL CHANGES

THIS SHEET HAS BEEN DRAWN USING  
COMPUTER AIDED DRAFTING/DESIGN (CAD/D)

**TAX MAP**  
**CITY OF NORTHFIELD**

ATLANTIC COUNTY NEW JERSEY  
SCALE: 1" = 100' JANUARY 2009

**MATTHEW F. DORAN P.E., P.L.S.**  
PROFESSIONAL ENGINEER & LAND SURVEYOR  
NEW JERSEY LICENSE NO. 28273  
840 NORTH MAIN STREET  
PLEASANTVILLE, NEW JERSEY, 08232  
TO SHOW CONDITIONS OF JANUARY 1, 2009

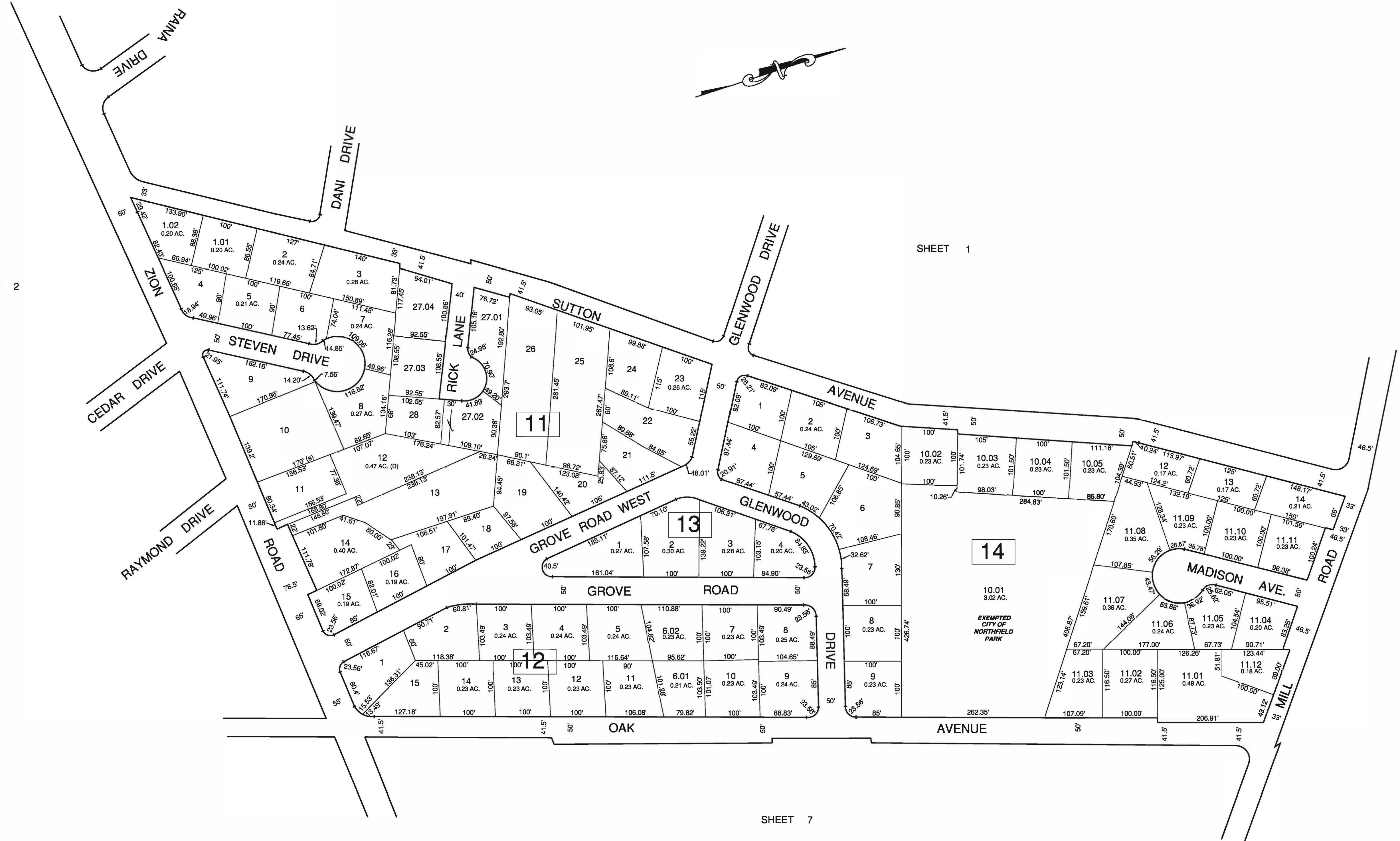


SHEET 2

SHEET 1

SHEET 4

SHEET 7



REVISIONS			
DATE	BY	LIC. No.	COMMENTS
07-19-23	HOWARD TRANSUE	33541	GENERAL CHANGES

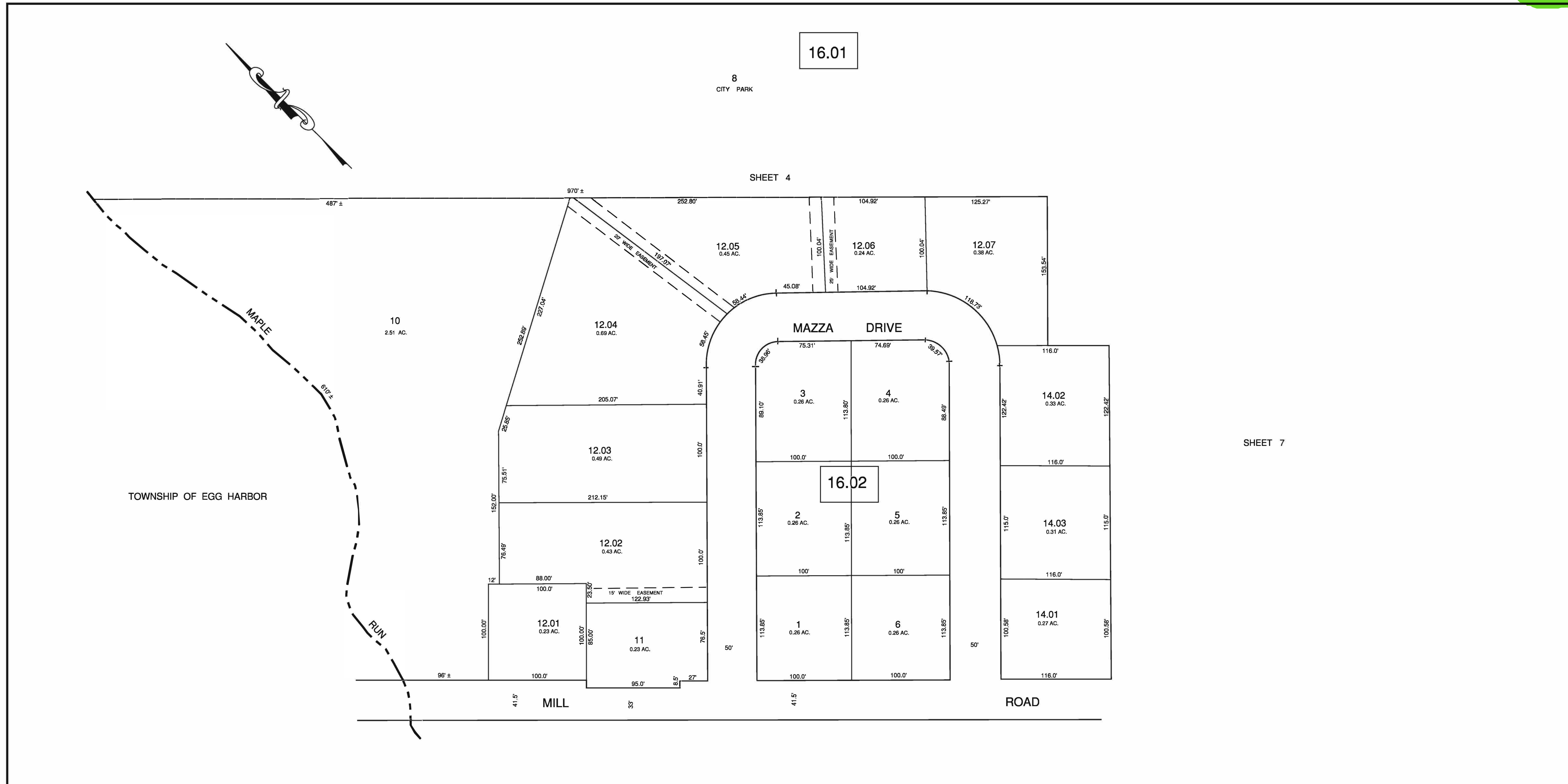
THIS SHEET HAS BEEN DRAWN USING  
COMPUTER AIDED DRAFTING/DESIGN (CAD/D)

**TAX MAP**  
**CITY OF NORTHFIELD**

ATLANTIC COUNTY NEW JERSEY  
SCALE: 1" = 100' JANUARY 2009

**MATTHEW F. DORAN P.E., P.L.S.**  
PROFESSIONAL ENGINEER & LAND SURVEYOR  
NEW JERSEY LICENSE NO. 28273  
840 NORTH MAIN STREET  
PLEASANTVILLE NEW JERSEY, 08232  
TO SHOW CONDITIONS OF JANUARY 1, 2009





REVISIONS			
DATE	BY	LIC. No.	COMMENTS
07-19-23	HOWARD TRANSUE	33541	GENERAL CHANGES

THIS SHEET HAS BEEN DRAWN USING  
COMPUTER AIDED DRAFTING/DESIGN (CAD/D)

**TAX MAP**  
**CITY OF NORTHFIELD**

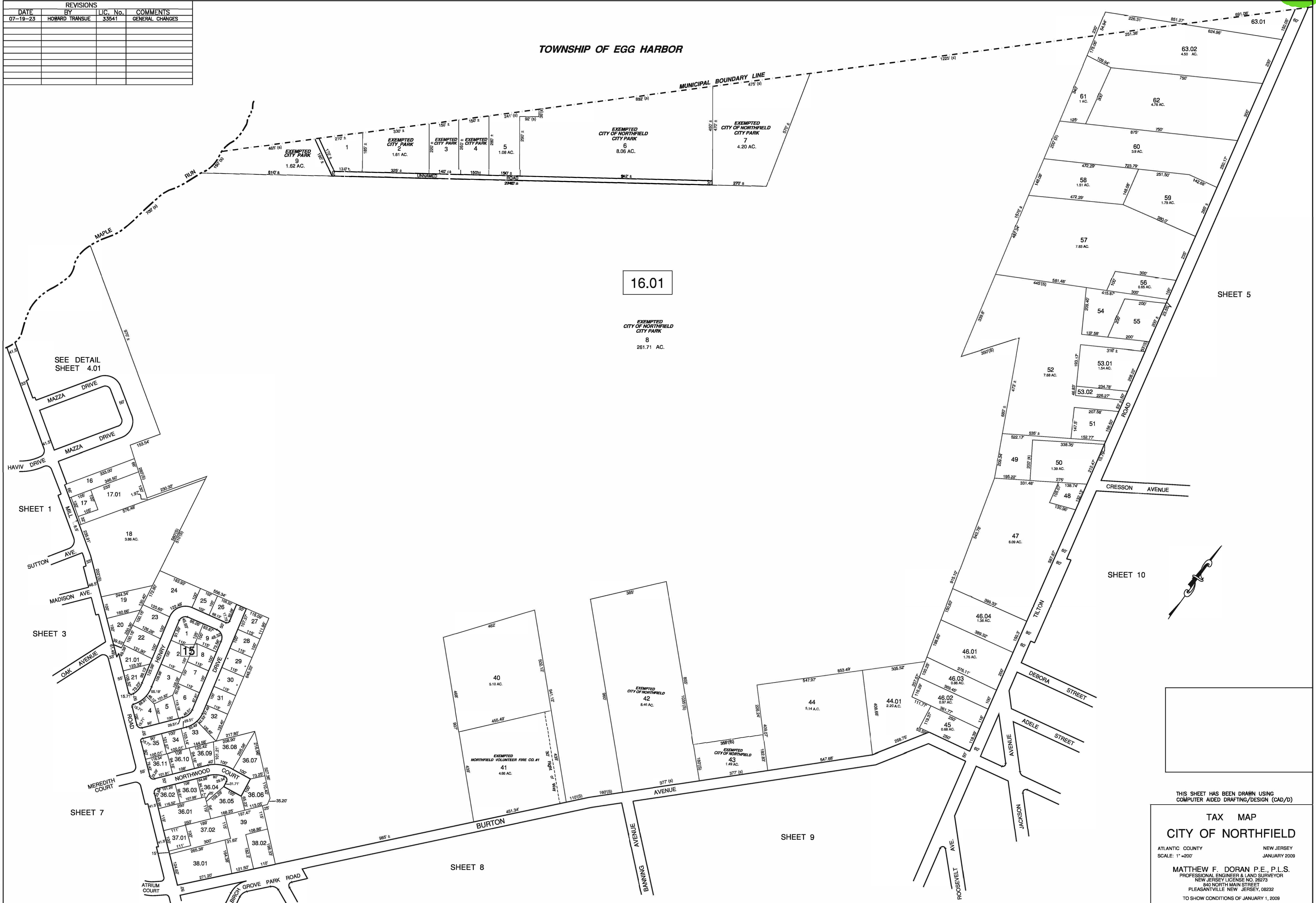
ATLANTIC COUNTY NEW JERSEY  
SCALE: 1" = 50' JANUARY 2009

**MATTHEW F. DORAN P.E., P.L.S.**  
PROFESSIONAL ENGINEER & LAND SURVEYOR  
NEW JERSEY LICENSE NO. 28273  
840 NORTH MAIN STREET  
PLEASANTVILLE, NEW JERSEY, 08232  
TO SHOW CONDITIONS OF JANUARY 1, 2009



REVISIONS			
DATE	BY	LIC. No.	COMMENTS
07-19-23	HOWARD TRANSUE	33841	GENERAL CHANGES

TOWNSHIP OF EGG HARBOR



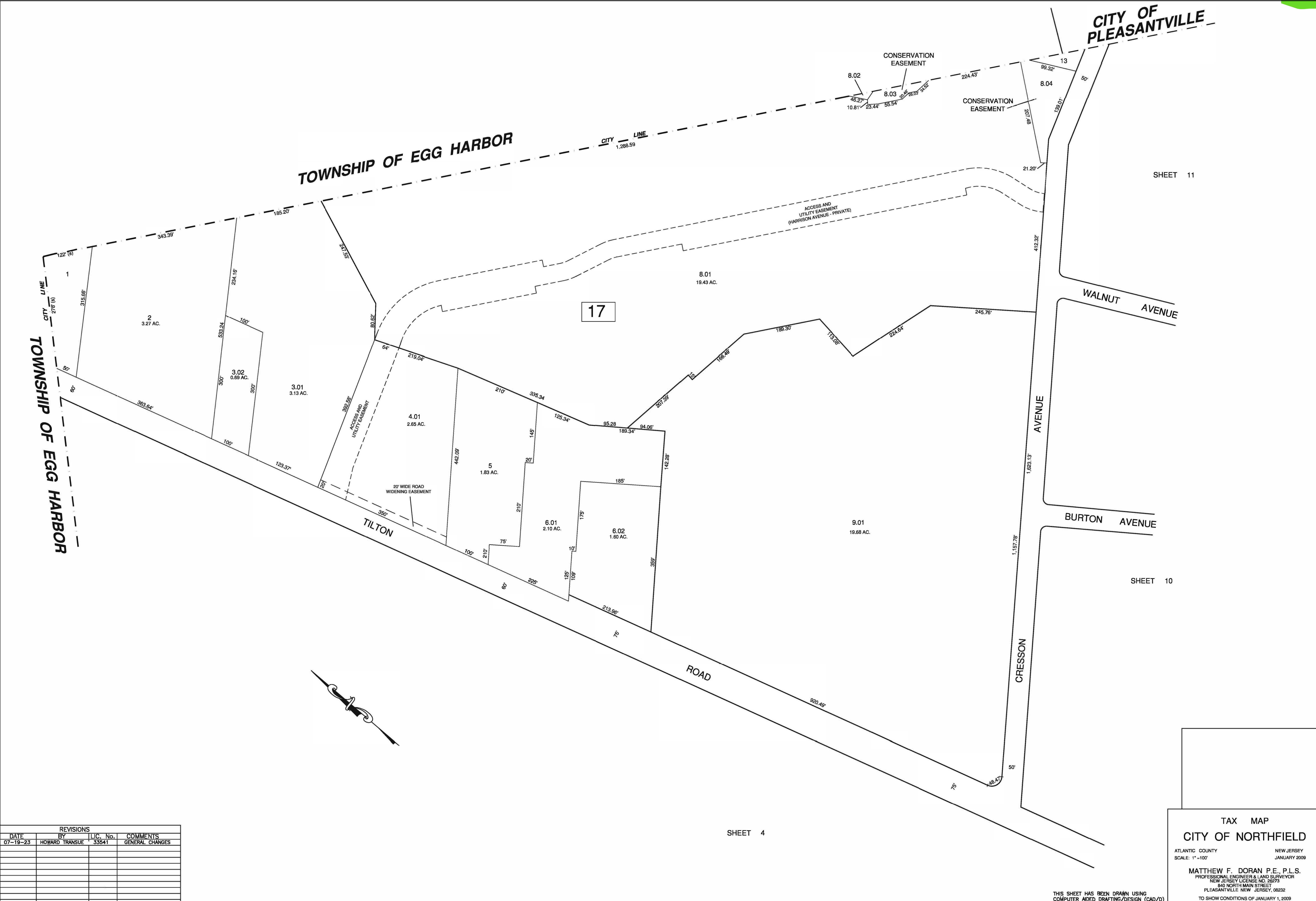
SHEET 5

SHEET 10

THIS SHEET HAS BEEN DRAWN USING COMPUTER AIDED DRAFTING/DESIGN (CAD/D)

**TAX MAP**  
**CITY OF NORTHFIELD**  
 ATLANTIC COUNTY NEW JERSEY  
 SCALE: 1" = 200' JANUARY 2009  
 MATTHEW F. DORAN P.E., P.L.S.  
 PROFESSIONAL ENGINEER & LAND SURVEYOR  
 NEW JERSEY LICENSE NO. 28273  
 840 NORTH MAIN STREET  
 PLEASANTVILLE NEW JERSEY, 08232  
 TO SHOW CONDITIONS OF JANUARY 1, 2009





REVISIONS			
DATE	BY	LIC. No.	COMMENTS
07-19-23	HOWARD TRANSUE	33541	GENERAL CHANGES

SHEET 4

**TAX MAP**  
**CITY OF NORTHFIELD**

ATLANTIC COUNTY      NEW JERSEY  
SCALE: 1" = 100'      JANUARY 2009

**MATTHEW F. DORAN P.E., P.L.S.**  
PROFESSIONAL ENGINEER & LAND SURVEYOR  
NEW JERSEY LICENSE NO. 28673  
840 NORTH MAIN STREET  
PLEASANTVILLE, NEW JERSEY, 08232  
TO SHOW CONDITIONS OF JANUARY 1, 2009

THIS SHEET HAS BEEN DRAWN USING COMPUTER AIDED DRAFTING/DESIGN (CAD/D)



REVISIONS			
DATE	BY	LIC. No.	COMMENTS
07-19-23	HOWARD TRANSUE	33541	GENERAL CHANGES

CITY OF LINWOOD

SHEET 2

SHEET 7



THIS SHEET HAS BEEN DRAWN USING COMPUTER AIDED DRAFTING/DESIGN (CAD/D)

TAX MAP  
 CITY OF NORTHFIELD  
 ATLANTIC COUNTY NEW JERSEY  
 SCALE: 1" = 100' JANUARY 2009  
 MATTHEW F. DORAN P.E., P.L.S.  
 PROFESSIONAL ENGINEER & LAND SURVEYOR  
 NEW JERSEY LICENSE NO. 36273  
 840 NORTH MAIN STREET  
 PLEASANTVILLE NEW JERSEY, 08222  
 TO SHOW CONDITIONS OF JANUARY 1, 2009

SHEET 12

SHEET 13





REVISIONS			
DATE	BY	LIC. No.	COMMENTS
07-19-23	HOWARD TRANSUE	33541	GENERAL CHANGES

THIS SHEET HAS BEEN DRAWN USING  
COMPUTER AIDED DRAFTING/DESIGN (CAD/D)

TAX MAP  
CITY OF NORTHFIELD

ATLANTIC COUNTY NEW JERSEY  
SCALE: 1" = 100'  
JANUARY 2009

MATTHEW F. DORAN P.E., P.L.S.  
PROFESSIONAL ENGINEER & LAND SURVEYOR  
NEW JERSEY LICENSE NO. 28273  
840 NORTH MAIN STREET  
PLEASANTVILLE NEW JERSEY, 08232  
TO SHOW CONDITIONS OF JANUARY 1, 2009





REVISIONS			
DATE	BY	LIC. No.	COMMENTS
07-19-23	HOWARD TRANSUE	33541	GENERAL CHANGES

THIS SHEET HAS BEEN DRAWN USING  
COMPUTER AIDED DRAFTING/DESIGN (CAD/D)

**TAX MAP**  
**CITY OF NORTHFIELD**

ATLANTIC COUNTY NEW JERSEY  
SCALE: 1"=100' JANUARY 2009

**MATTHEW F. DORAN P.E., P.L.S.**  
PROFESSIONAL ENGINEER & LAND SURVEYOR  
NEW JERSEY LICENSE NO. 28273  
840 NORTH MAIN STREET  
PLEASANTVILLE NEW JERSEY, 08232  
TO SHOW CONDITIONS OF JANUARY 1, 2009



REVISIONS			
DATE	BY	LIC. No.	COMMENTS
07-19-23	HOWARD TRANSUE	33641	GENERAL CHANGES

TAX MAP  
 CITY OF NORTHFIELD  
 ATLANTIC COUNTY NEW JERSEY  
 SCALE: 1"=100' JANUARY 2009  
 MATTHEW F. DORAN P.E., P.L.S.  
 PROFESSIONAL ENGINEER & LAND SURVEYOR  
 NEW JERSEY LICENSE NO. 26273  
 840 NORTH MAIN STREET  
 PLEASANTVILLE NEW JERSEY, 08232  
 TO SHOW CONDITIONS OF JANUARY 1, 2009

SHEET 4

SHEET 8

SHEET 14

SHEET 10

SHEET 15

SHEET 16





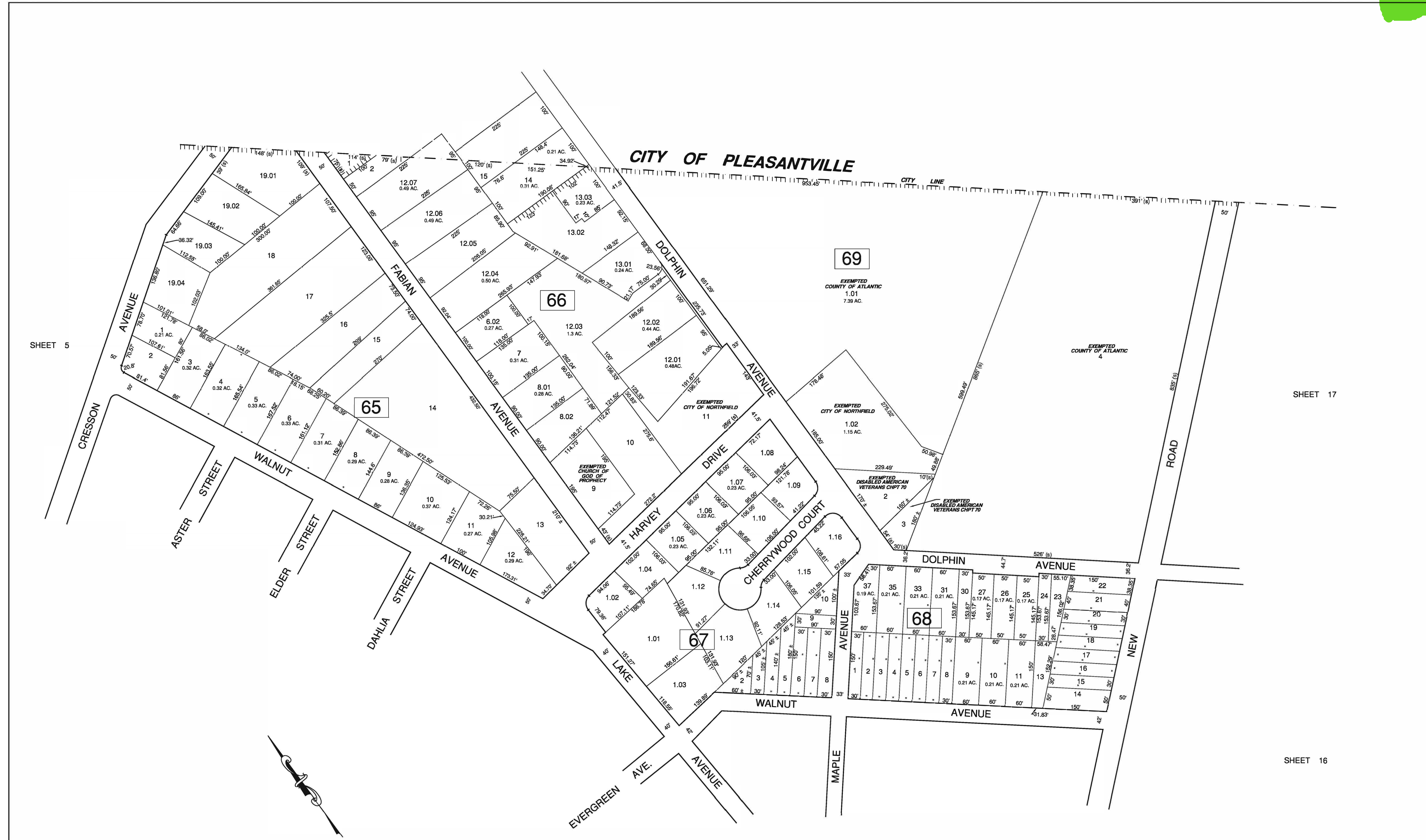
TAX MAP  
 CITY OF NORTHFIELD  
 ATLANTIC COUNTY NEW JERSEY  
 SCALE: 1" = 100' JANUARY 2009  
 MATTHEW F. DORAN P.E., P.L.S.  
 PROFESSIONAL ENGINEER & LAND SURVEYOR  
 NEW JERSEY LICENSE NO. 28273  
 840 NORTH MAIN STREET  
 PLEASANTVILLE, NEW JERSEY 08232  
 TO SHOW CONDITIONS OF JANUARY 1, 2009

THIS SHEET HAS BEEN DRAWN USING COMPUTER AIDED DRAFTING/DESIGN (CAD/D)



REVISIONS			
DATE	BY	LIC. No.	COMMENTS
07-19-23	HOWARD TRANSUE	33541	GENERAL CHANGES





SHEET 5

SHEET 17

SHEET 16

CITY OF PLEASANTVILLE

THIS SHEET HAS BEEN DRAWN USING  
COMPUTER AIDED DRAFTING/DESIGN (CAD/D)

**TAX MAP**  
**CITY OF NORTHFIELD**

ATLANTIC COUNTY NEW JERSEY  
SCALE: 1"=100' JANUARY 2009

MATTHEW F. DORAN P.E., P.L.S.  
PROFESSIONAL ENGINEER & LAND SURVEYOR  
NEW JERSEY LICENSE NO. 28273  
840 NORTH MAIN STREET  
PLEASANTVILLE, NEW JERSEY 08232  
TO SHOW CONDITIONS OF JANUARY 1, 2009

REVISIONS			
DATE	BY	LIC. No.	COMMENTS
07-19-23	HOWARD TRANSUE	33541	GENERAL CHANGES

SHEET 10



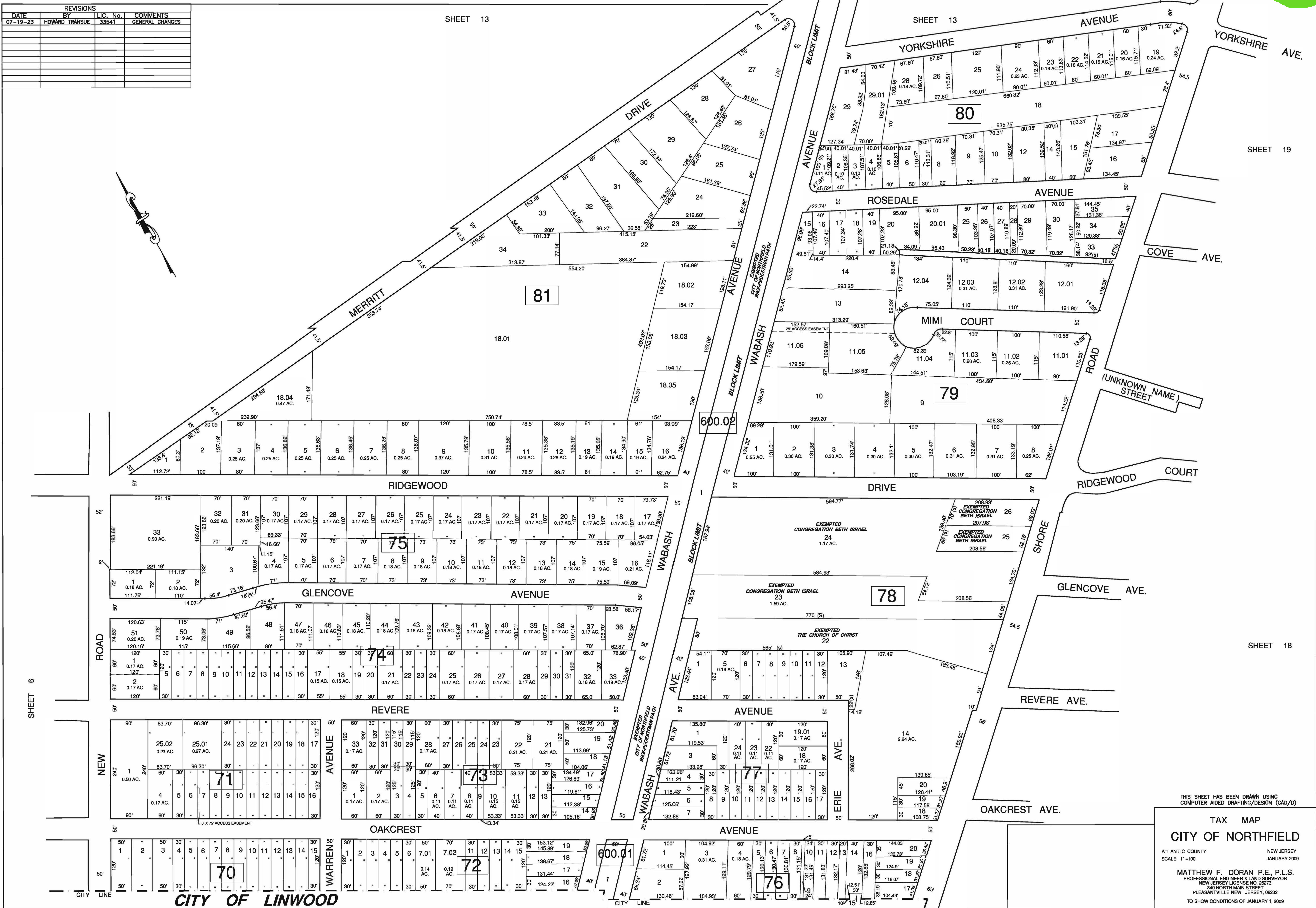
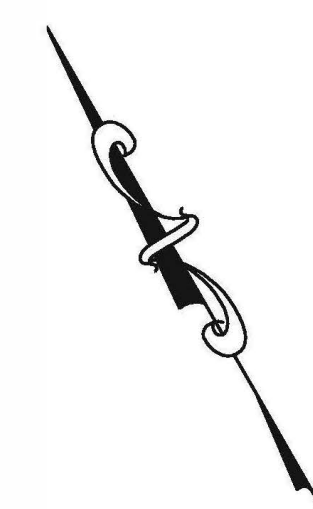
REVISIONS			
DATE	BY	LIC. No.	COMMENTS
07-19-23	HOWARD TRANSUE	33541	GENERAL CHANGES

SHEET 13

SHEET 13

SHEET 19

SHEET 18



THIS SHEET HAS BEEN DRAWN USING  
COMPUTER AIDED DRAFTING/DESIGN (CAD/D)

**TAX MAP**  
**CITY OF NORTHFIELD**  
ATLANTIC COUNTY NEW JERSEY  
SCALE: 1"=100' JANUARY 2009

**MATTHEW F. DORAN P.E., P.L.S.**  
PROFESSIONAL ENGINEER & LAND SURVEYOR  
NEW JERSEY LICENSE NO. 28773  
840 NORTH MAIN STREET  
PLEASANTVILLE, NEW JERSEY 08223  
TO SHOW CONDITIONS OF JANUARY 1, 2009



REVISIONS			
DATE	BY	LIC. No.	COMMENTS
07-19-23	HOWARD TRANSUE	33641	GENERAL CHANGES

TAX MAP  
 CITY OF NORTHFIELD  
 ATLANTIC COUNTY NEW JERSEY  
 SCALE: 1" = 100' JANUARY 2009  
 MATTHEW F. DORAN P.E., P.L.S.  
 PROFESSIONAL ENGINEER & LAND SURVEYOR  
 NEW JERSEY LICENSE NO. 26273  
 840 NORTH MAIN STREET  
 PLEASANTVILLE, NEW JERSEY, 08232  
 TO SHOW CONDITIONS OF JANUARY 1, 2009  
 THIS SHEET HAS BEEN DRAWN USING  
 COMPUTER AIDED DRAFTING/DESIGN (CAD/D)

SHEET 7

SHEET 6

SHEET 19





REVISIONS			
DATE	BY	LIC. No.	COMMENTS
3/29/10	MATTHEW F. DORAN	28273	BL. 88 LOTS 11.01-11.07
07-19-23	HOWARD TRANSUE	33541	GENERAL CHANGES

**TAX MAP**  
**CITY OF NORTHFIELD**

ATLANTIC COUNTY NEW JERSEY  
SCALE: 1"=100' JANUARY 2009  
MATTHEW F. DORAN P.E., P.L.S.  
PROFESSIONAL ENGINEER & LAND SURVEYOR  
NEW JERSEY LICENSE NO. 28273  
840 NORTH MAIN STREET  
PLEASANTVILLE, NEW JERSEY, 08232  
TO SHOW CONDITIONS OF JANUARY 1, 2009

THIS SHEET IS A REVISED COPY OF THE ORIGINAL STAMPED  
MYLAR DATED 2/19/2010, SERIAL NUMBER 947.

THIS SHEET HAS BEEN DRAWN USING  
COMPUTER AIDED DRAFTING/DESIGN (CAD/D)







REVISIONS			
DATE	BY	LIC. No.	COMMENTS
07-19-23	HOWARD TRANSUE	33841	GENERAL CHANGES

THIS SHEET HAS BEEN DRAWN USING  
COMPUTER AIDED DRAFTING/DESIGN (CAD/D)

**TAX MAP**  
**CITY OF NORTHFIELD**

ATLANTIC COUNTY NEW JERSEY  
SCALE: 1"=100' JANUARY 2009

**MATTHEW F. DORAN P.E., P.L.S.**  
PROFESSIONAL ENGINEER & LAND SURVEYOR  
NEW JERSEY LICENSE NO. 20873  
840 NORTH MAIN STREET  
PLEASANTVILLE, NEW JERSEY, 08232  
TO SHOW CONDITIONS OF JANUARY 1, 2009



REVISIONS			
DATE	BY	LIC. No.	COMMENTS
07-19-23	HOMER TRANSUE	33841	GENERAL CHANGES

TAX MAP  
CITY OF NORTHFIELD  
ATLANTIC COUNTY NEW JERSEY  
SCALE: 1"=100'  
JANUARY 2009  
MATTHEW F. DORAN P.E., P.L.S.  
PROFESSIONAL ENGINEER & LAND SURVEYOR  
NEW JERSEY LICENSE NO. 28273  
840 NORTH MAIN STREET  
PLEASANTVILLE NEW JERSEY, 08232  
TO SHOW CONDITIONS OF JANUARY 1, 2009

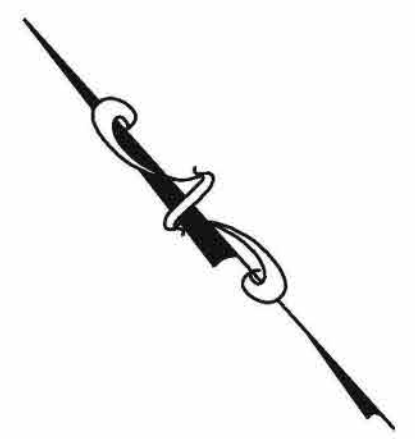
SHEET 17

THIS SHEET HAS BEEN DRAWN USING COMPUTER AIDED DRAFTING/DESIGN (CAD/D)

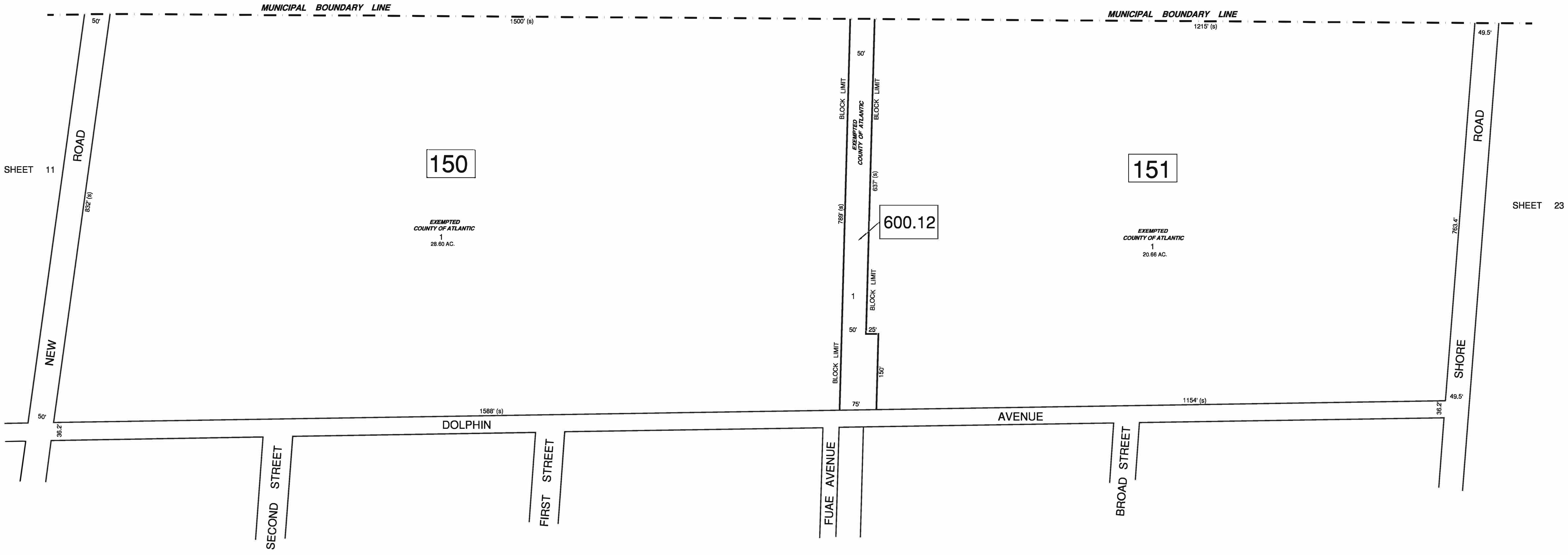


SHEET 15





CITY OF PLEASANTVILLE



REVISIONS			
DATE	BY	LIC. No.	COMMENTS
07-19-23	HOWARD TRANSUE	33641	GENERAL CHANGES

THIS SHEET HAS BEEN DRAWN USING  
COMPUTER AIDED DRAFTING/DESIGN (CAD/D)

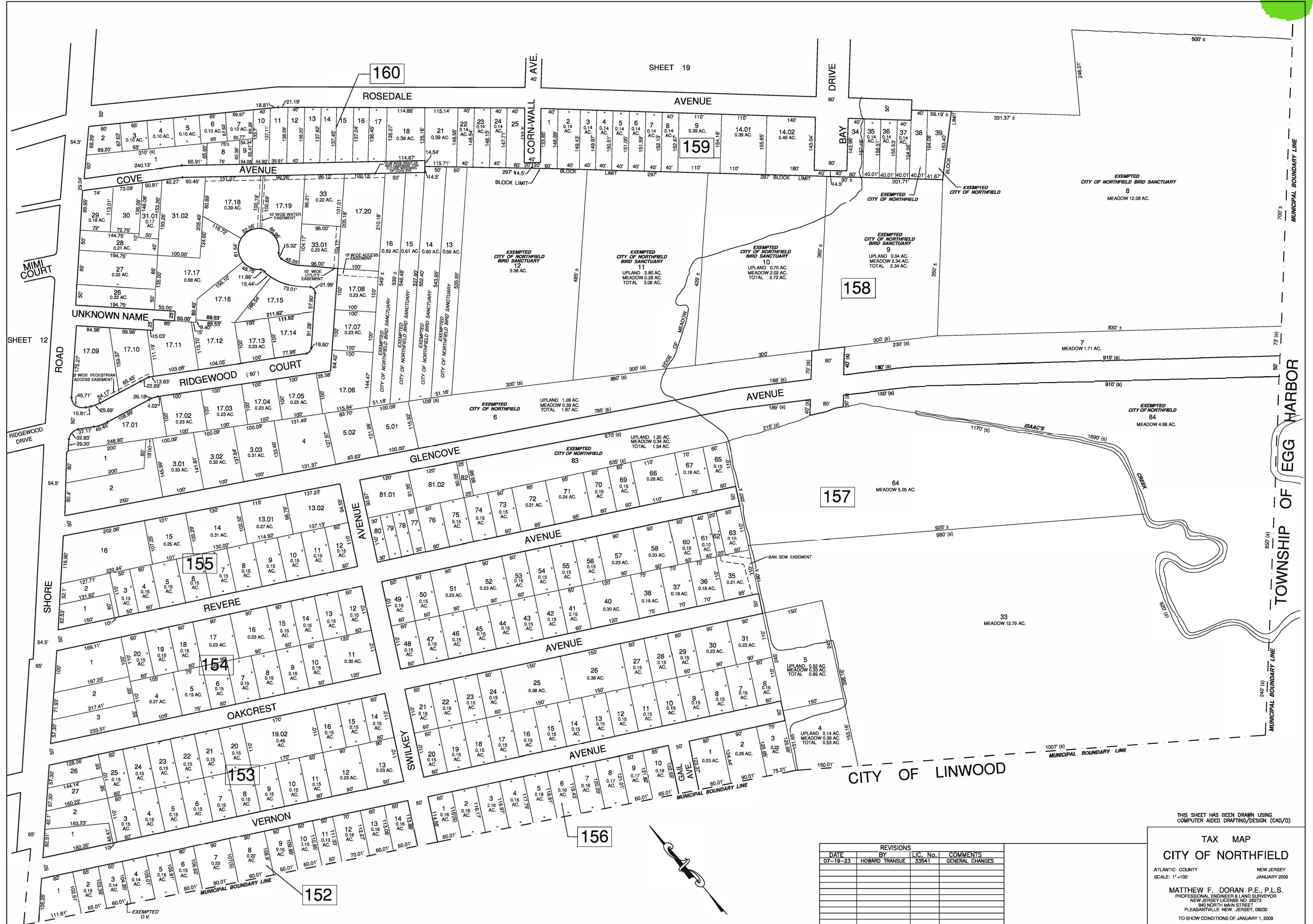
**TAX MAP**  
**CITY OF NORTHFIELD**

ATLANTIC COUNTY NEW JERSEY  
SCALE: 1" = 100' JANUARY 2009

**MATTHEW F. DORAN P.E., P.L.S.**  
PROFESSIONAL ENGINEER & LAND SURVEYOR  
NEW JERSEY LICENSE NO. 28273  
840 NORTH MAIN STREET  
PLEASANTVILLE NEW JERSEY, 08232  
TO SHOW CONDITIONS OF JANUARY 1, 2009



SHEET 19



REVISIONS			
DATE	BY	LIC. No.	COMMENTS
07-19-23	HOWARD TRANSUE	33541	GENERAL CHANGES

THIS SHEET HAS BEEN DRAWN USING COMPUTER AIDED DRAFTING/DESIGN (CAD/D)

**TAX MAP**  
**CITY OF NORTHFIELD**  
 ATLANTIC COUNTY NEW JERSEY  
 SCALE: 1"=100' JANUARY 2009

**MATTHEW F. DORAN P.E., P.L.S.**  
 PROFESSIONAL ENGINEER & LAND SURVEYOR  
 NEW JERSEY LICENSE NO. 28273  
 840 NORTH MAIN STREET  
 PLEASANTVILLE, NEW JERSEY, 08232  
 TO SHOW CONDITIONS OF JANUARY 1, 2009



TAX MAP  
CITY OF NORTHFIELD

ATLANTIC COUNTY NEW JERSEY  
SCALE: 1" = 100' JANUARY 2009

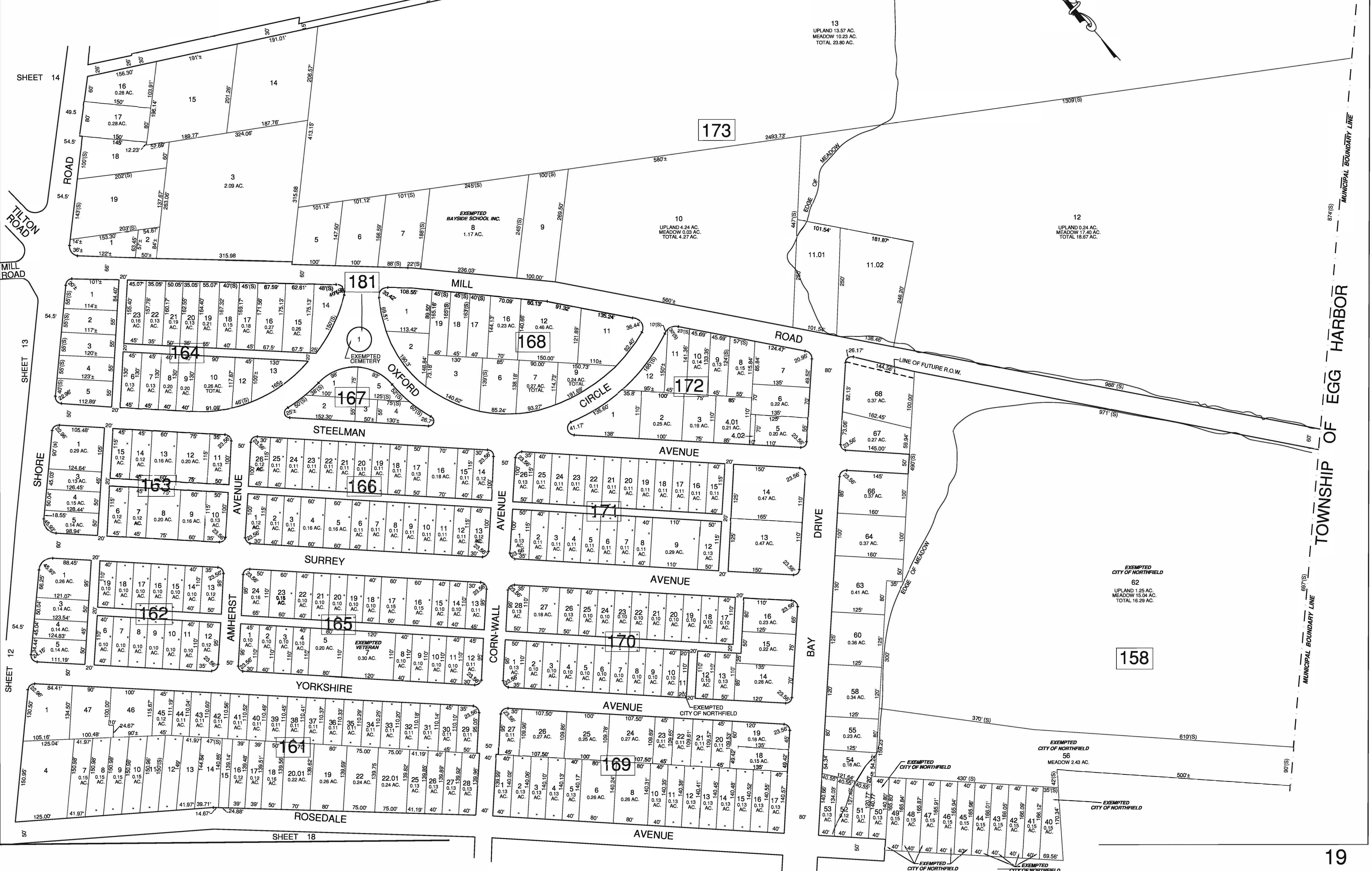
MATTHEW F. DORAN P.E., P.L.S.  
PROFESSIONAL ENGINEER & LAND SURVEYOR  
NEW JERSEY LICENSE NO. 26273  
940 NORTH MAIN STREET  
PLEASANTVILLE, NEW JERSEY 08232  
TO SHOW CONDITIONS OF JANUARY 1, 2009

THIS SHEET HAS BEEN DRAWN USING  
COMPUTER AIDED DRAFTING/DESIGN (CAD/D)

REVISIONS			
DATE	BY	LIC. No.	COMMENTS
07-19-23	HOWARD TRANSUE	33541	GENERAL CHANGES

SHEET 20

1179(S)



173

181

164

167

168

172

163

166

171

162

165

170

158

161

169





175

1.01  
 UPLAND 71.71 AC.  
 MEADOW 23.02 AC.  
 TOTAL 94.73 AC.

174

REVISIONS			
DATE	BY	LIC. No.	COMMENTS
07-19-23	HOWARD TRANSUE	33541	GENERAL CHANGES

**TAX MAP**  
**CITY OF NORTHFIELD**  
 ATLANTIC COUNTY NEW JERSEY  
 SCALE: 1" = 100' JANUARY 2009  
 MATTHEW F. DORAN P.E., P.L.S.  
 PROFESSIONAL ENGINEER & LAND SURVEYOR  
 NEW JERSEY LICENSE NO. 28273  
 840 NORTH MAIN STREET  
 PLEASANTVILLE NEW JERSEY 08222  
 TO SHOW CONDITIONS OF JANUARY 1, 2009

SHEET 15

SHEET 21

PLACE

SHEET 14

OAKVIEW DRIVE

36

37.01

37.02

37.03

SHEET 19

THIS SHEET HAS BEEN DRAWN USING  
 COMPUTER AIDED DRAFTING/DESIGN (CAD/D)



REVISIONS			
DATE	BY	LIC. No.	COMMENTS
07-19-23	HOWARD TRANSUE	33541	GENERAL CHANGES



SHEET 16

175

48  
 UPLAND 56.24 AC.  
 MEADOW 64.39 AC.  
 TOTAL 120.63 AC.

TOWNSHIP OF EGG HARBOR

THIS SHEET HAS BEEN DRAWN USING  
 COMPUTER AIDED DRAFTING/DESIGN (CAD/D)

**TAX MAP**  
**CITY OF NORTHFIELD**

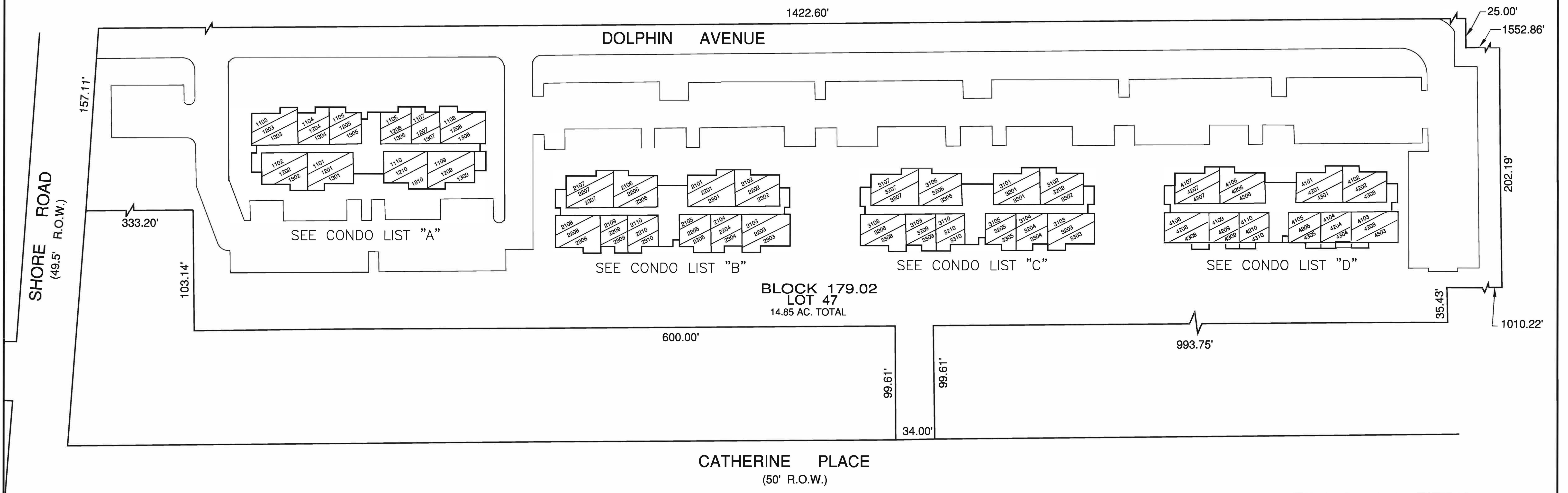
ATLANTIC COUNTY NEW JERSEY  
 SCALE: 1" = 100' JANUARY 2009

**MATTHEW F. DORAN P.E., P.L.S.**  
 PROFESSIONAL ENGINEER & LAND SURVEYOR  
 NEW JERSEY LICENSE NO. 86073  
 840 NORTH MAIN STREET  
 PLEASANTVILLE, NEW JERSEY, 08232  
 TO SHOW CONDITIONS OF JANUARY 1, 2009

SHEET 20

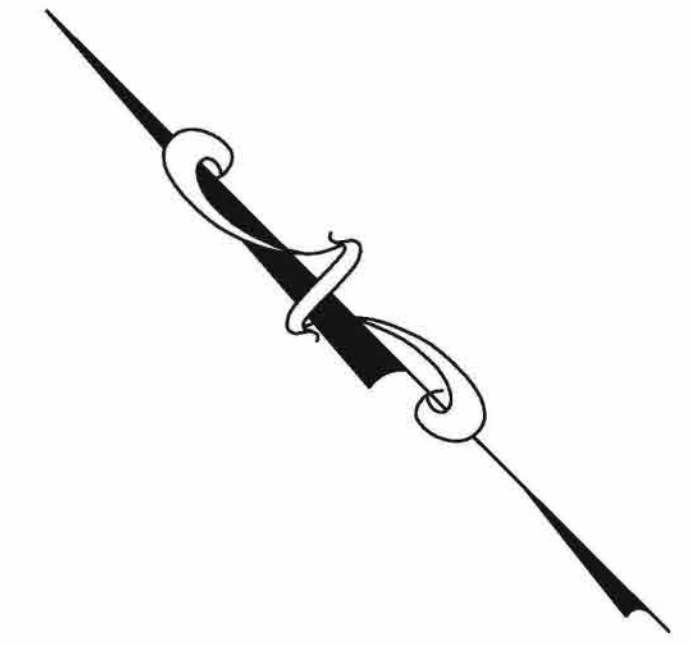


REVISIONS			
DATE	BY	LIC. No.	COMMENTS
07-19-23	HOWARD TRANSUE	33541	GENERAL CHANGES



SEE ADJOINING SHEET 22

CONDO LIST A			CONDO LIST B			CONDO LIST C			CONDO LIST D		
UNIT	SQ. FT.	REMARKS	UNIT	SQ. FT.	REMARKS	UNIT	SQ. FT.	REMARKS	UNIT	SQ. FT.	REMARKS
1101	1131	S.F. FIRST FLOOR	2101	1131	S.F. FIRST FLOOR	3101	1131	S.F. FIRST FLOOR	4101	1131	S.F. FIRST FLOOR
1102	1131	S.F. FIRST FLOOR	2102	1131	S.F. FIRST FLOOR	3102	1131	S.F. FIRST FLOOR	4102	1131	S.F. FIRST FLOOR
1103	1131	S.F. FIRST FLOOR	2103	1131	S.F. FIRST FLOOR	3103	1131	S.F. FIRST FLOOR	4103	1131	S.F. FIRST FLOOR
1104	787	S.F. FIRST FLOOR	2104	787	S.F. FIRST FLOOR	3104	787	S.F. FIRST FLOOR	4104	787	S.F. FIRST FLOOR
1105	787	S.F. FIRST FLOOR	2105	787	S.F. FIRST FLOOR	3105	787	S.F. FIRST FLOOR	4105	787	S.F. FIRST FLOOR
1106	787	S.F. FIRST FLOOR	2106	1131	S.F. FIRST FLOOR	3106	1131	S.F. FIRST FLOOR	4106	1131	S.F. FIRST FLOOR
1107	787	S.F. FIRST FLOOR	2107	1131	S.F. FIRST FLOOR	3107	1131	S.F. FIRST FLOOR	4107	1131	S.F. FIRST FLOOR
1108	1131	S.F. FIRST FLOOR	2108	1131	S.F. FIRST FLOOR	3108	1131	S.F. FIRST FLOOR	4108	1131	S.F. FIRST FLOOR
1109	1131	S.F. FIRST FLOOR	2109	787	S.F. FIRST FLOOR	3109	787	S.F. FIRST FLOOR	4109	787	S.F. FIRST FLOOR
1110	1131	S.F. FIRST FLOOR	2110	787	S.F. FIRST FLOOR	3110	787	S.F. FIRST FLOOR	4110	787	S.F. FIRST FLOOR
1201	1131	S.F. SECOND FLOOR	2201	1131	S.F. SECOND FLOOR	3201	1131	S.F. SECOND FLOOR	4201	1131	S.F. SECOND FLOOR
1202	1131	S.F. SECOND FLOOR	2202	1131	S.F. SECOND FLOOR	3202	1131	S.F. SECOND FLOOR	4202	1131	S.F. SECOND FLOOR
1203	1131	S.F. SECOND FLOOR	2203	1131	S.F. SECOND FLOOR	3203	1131	S.F. SECOND FLOOR	4203	1131	S.F. SECOND FLOOR
1204	787	S.F. SECOND FLOOR	2204	787	S.F. SECOND FLOOR	3204	787	S.F. SECOND FLOOR	4204	787	S.F. SECOND FLOOR
1205	787	S.F. SECOND FLOOR	2205	787	S.F. SECOND FLOOR	3205	787	S.F. SECOND FLOOR	4205	787	S.F. SECOND FLOOR
1206	787	S.F. SECOND FLOOR	2206	1131	S.F. SECOND FLOOR	3206	1131	S.F. SECOND FLOOR	4206	1131	S.F. SECOND FLOOR
1207	787	S.F. SECOND FLOOR	2207	1131	S.F. SECOND FLOOR	3207	1131	S.F. SECOND FLOOR	4207	1131	S.F. SECOND FLOOR
1208	1131	S.F. SECOND FLOOR	2208	1131	S.F. SECOND FLOOR	3208	1131	S.F. SECOND FLOOR	4208	1131	S.F. SECOND FLOOR
1209	1131	S.F. SECOND FLOOR	2209	787	S.F. SECOND FLOOR	3209	787	S.F. SECOND FLOOR	4209	787	S.F. SECOND FLOOR
1210	1131	S.F. SECOND FLOOR	2210	787	S.F. SECOND FLOOR	3210	787	S.F. SECOND FLOOR	4210	787	S.F. SECOND FLOOR
1301	1131	S.F. THIRD FLOOR	2301	1131	S.F. THIRD FLOOR	3301	1131	S.F. THIRD FLOOR	4301	1131	S.F. THIRD FLOOR
1302	1131	S.F. THIRD FLOOR	2302	1131	S.F. THIRD FLOOR	3302	1131	S.F. THIRD FLOOR	4302	1131	S.F. THIRD FLOOR
1303	1131	S.F. THIRD FLOOR	2303	1131	S.F. THIRD FLOOR	3303	1131	S.F. THIRD FLOOR	4303	1131	S.F. THIRD FLOOR
1304	787	S.F. THIRD FLOOR	2304	787	S.F. THIRD FLOOR	3304	787	S.F. THIRD FLOOR	4304	787	S.F. THIRD FLOOR
1305	787	S.F. THIRD FLOOR	2305	787	S.F. THIRD FLOOR	3305	787	S.F. THIRD FLOOR	4305	787	S.F. THIRD FLOOR
1306	787	S.F. THIRD FLOOR	2306	1131	S.F. THIRD FLOOR	3306	1131	S.F. THIRD FLOOR	4306	1131	S.F. THIRD FLOOR
1307	787	S.F. THIRD FLOOR	2307	1131	S.F. THIRD FLOOR	3307	1131	S.F. THIRD FLOOR	4307	1131	S.F. THIRD FLOOR
1308	1131	S.F. THIRD FLOOR	2308	1131	S.F. THIRD FLOOR	3308	1131	S.F. THIRD FLOOR	4308	1131	S.F. THIRD FLOOR
1309	1131	S.F. THIRD FLOOR	2309	787	S.F. THIRD FLOOR	3309	787	S.F. THIRD FLOOR	4309	787	S.F. THIRD FLOOR
1310	1131	S.F. THIRD FLOOR	2310	787	S.F. THIRD FLOOR	3310	787	S.F. THIRD FLOOR	4310	787	S.F. THIRD FLOOR



THIS SHEET HAS BEEN DRAWN USING  
COMPUTER AIDED DRAFTING/DESIGN (CAD/D)

**TAX MAP**  
**CITY OF NORTHFIELD**

ATLANTIC COUNTY  
SCALE: 1" = 40'

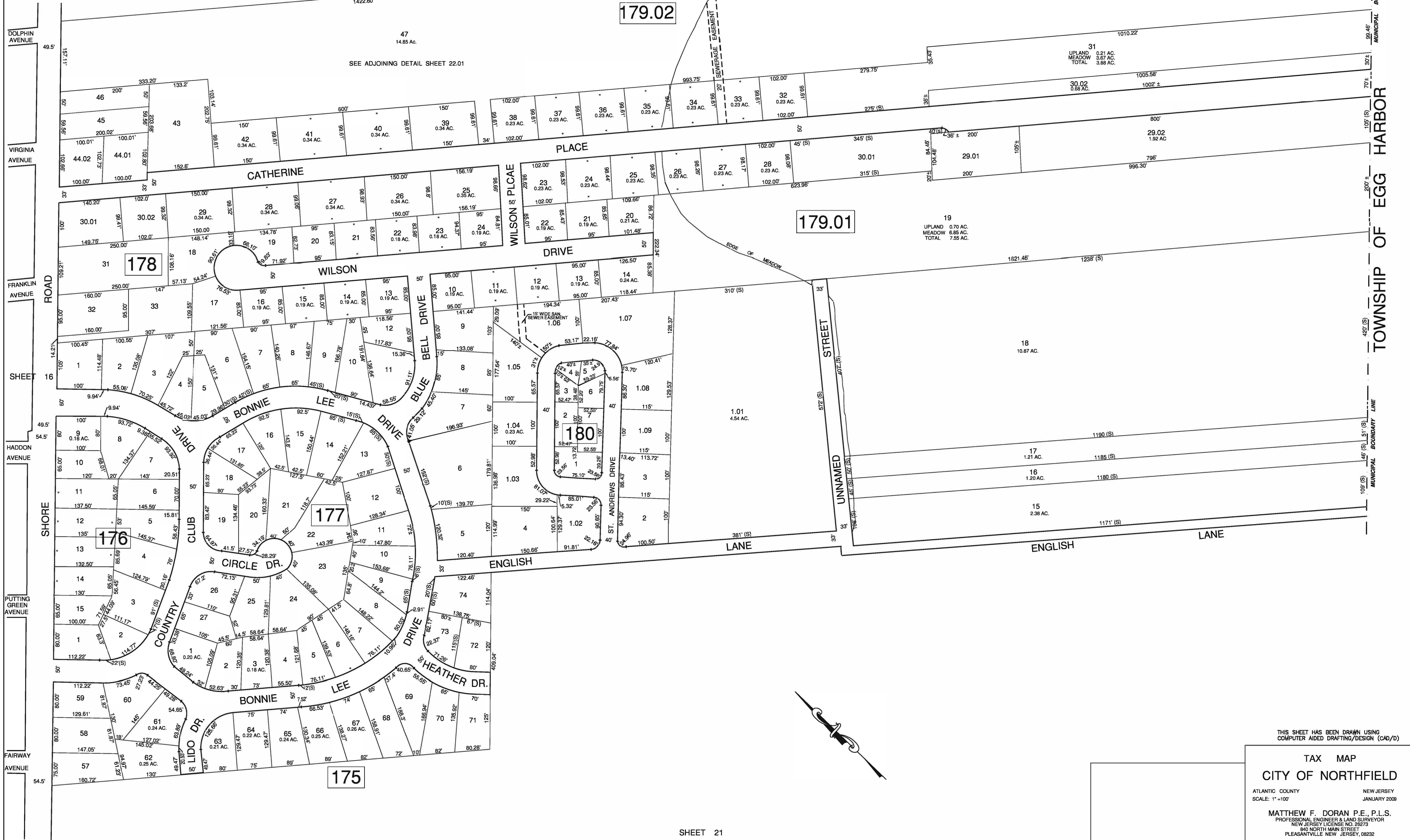
NEW JERSEY  
JANUARY 2009

**MATTHEW F. DORAN P.E., P.L.S.**  
PROFESSIONAL ENGINEER & LAND SURVEYOR  
NEW JERSEY LICENSE NO. 26273  
840 NORTH MAIN STREET  
PLEASANTVILLE, NEW JERSEY, 08232  
TO SHOW CONDITIONS OF JANUARY 1, 2009



REVISIONS			
DATE	BY	LIC. No.	COMMENTS
07-19-23	HOWARD TRANSUE	33541	GENERAL CHANGES

SHEET 17



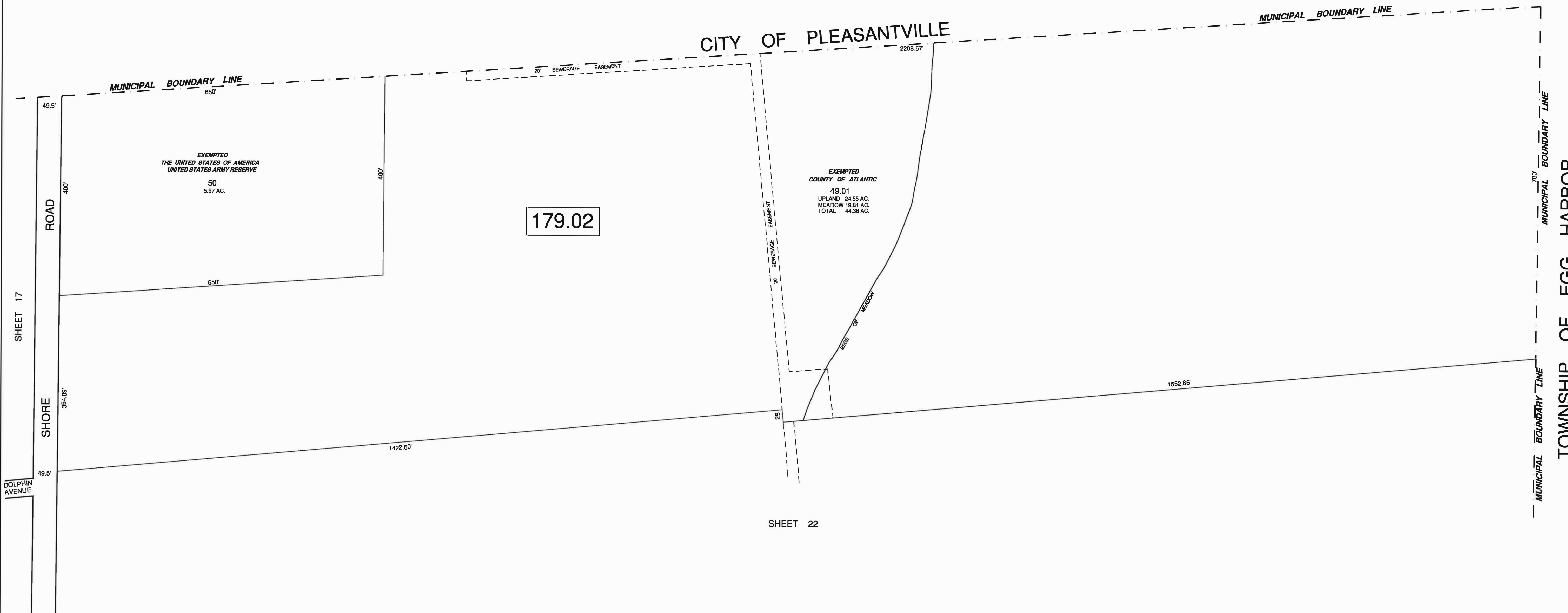
THIS SHEET HAS BEEN DRAWN USING  
COMPUTER AIDED DRAFTING/DESIGN (CAD/D)

**TAX MAP**  
**CITY OF NORTHFIELD**

ATLANTIC COUNTY NEW JERSEY  
SCALE: 1" = 100' JANUARY 2009

**MATTHEW F. DORAN P.E., P.L.S.**  
PROFESSIONAL ENGINEER & LAND SURVEYOR  
NEW JERSEY LICENSE NO. 28273  
840 NORTH MAIN STREET  
PLEASANTVILLE, NEW JERSEY 08232  
TO SHOW CONDITIONS OF JANUARY 1, 2009





SHEET 17

DOLPHIN AVENUE

SHEET 16

SHEET 22

179.02

EXEMPTED  
THE UNITED STATES OF AMERICA  
UNITED STATES ARMY RESERVE  
50  
5.97 AC.

EXEMPTED  
COUNTY OF ATLANTIC  
49.01  
UPLAND 24.55 AC.  
MEADOW 19.81 AC.  
TOTAL 44.36 AC.

REVISIONS			
DATE	BY	LIC. No.	COMMENTS
07-19-23	HOWARD TRANSUE	33541	GENERAL CHANGES

THIS SHEET HAS BEEN DRAWN USING  
COMPUTER AIDED DRAFTING/DESIGN (CAD/D)

**TAX MAP**  
**CITY OF NORTHFIELD**  
 ATLANTIC COUNTY NEW JERSEY  
 SCALE: 1" = 100' JANUARY 2009  
**MATTHEW F. DORAN P.E., P.L.S.**  
 PROFESSIONAL ENGINEER & LAND SURVEYOR  
 NEW JERSEY LICENSE NO. 26273  
 840 NORTH MAIN STREET  
 PLEASANTVILLE NEW JERSEY, 08232  
 TO SHOW CONDITIONS OF JANUARY 1, 2009